



LOCAL AREA NETWORKS (LAN)



SERVERS



DATA CENTERS



INDUSTRIAL PLCS



CASH REGISTERS



ELECTRO-MEDICAL DEVICES



EMERGENCY DEVICES (Lights/Alarms)



TELECOM-MUNICATION DEVICES

# Power Dialog Plus

## 6.5-10 kVA

single/single-phase and three/single-phase

Power Dialog Plus 6.5-10 kVA



The **POWER DIALOG PLUS** series includes the 6.5-8-10kVA single/single-phase and three/single-phase models and uses double conversion on-line technology (VFI). The load is powered continuously by the inverter with an EMI filtered, stabilised and regulated sinewave supply. The input and output EMI filters considerably increase the immunity of the load to mains disturbances and surges, even on bypass. Additional battery extension packs allow the standard battery runtime to be extended up to several hours.

For technology, outstanding performance (selectable operating modes: On-line, Economy, Smart-Active and Standby/Off - for emergency lighting applications), advanced diagnostics (standard LCD display, RS232 interfaces with **PowerShield**<sup>3</sup> software included, EPO input contact, and a network interface slot), **POWER DIALOG PLUS** provides maximum protection for vital 'mission-critical' networks and security applications (electromedical).

**HIGH RELIABILITY**

- Full microprocessor control with no-break static and manual by-pass

**LOW POWER CONSUMPTION**

To increase efficiency up to 98%:

- **Economy Mode:** uses Line Interactive VI technology to power less critical loads from the mains supply for certain periods. The function can be set from the front panel keypad or remotely using software
- **Smart Active:** if the mains supply is out of range, the UPS will power the load from the inverter as an On-line UPS. When the mains supply returns to within range again, the UPS will monitor this for a certain period before selecting Line Interactive operation

**SIMPLE TO INSTALL**

- Capability to connect to a single or three phase mains supply
- Output terminal block + 2 IEC outlets for powering local equipment (computers, modems and notebooks)
- Easy to position (integrated castors)

**HIGHLY RELIABLE BATTERY PERFORMANCE**

- Built-in automatic and manual battery test feature

**LOW IMPACT ON MAINS**

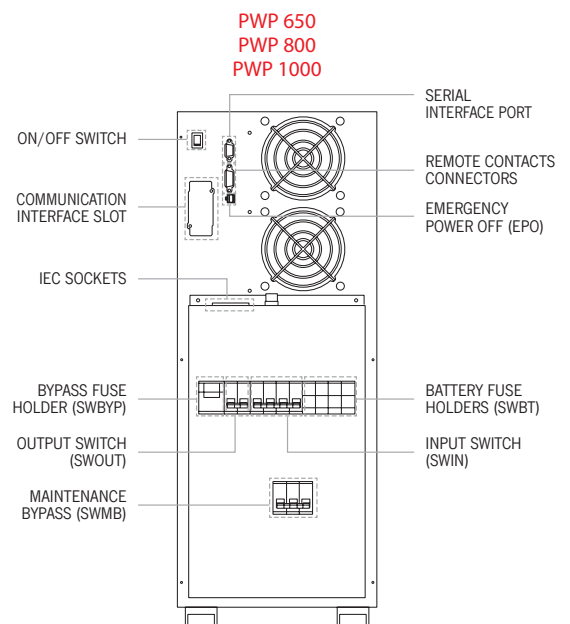
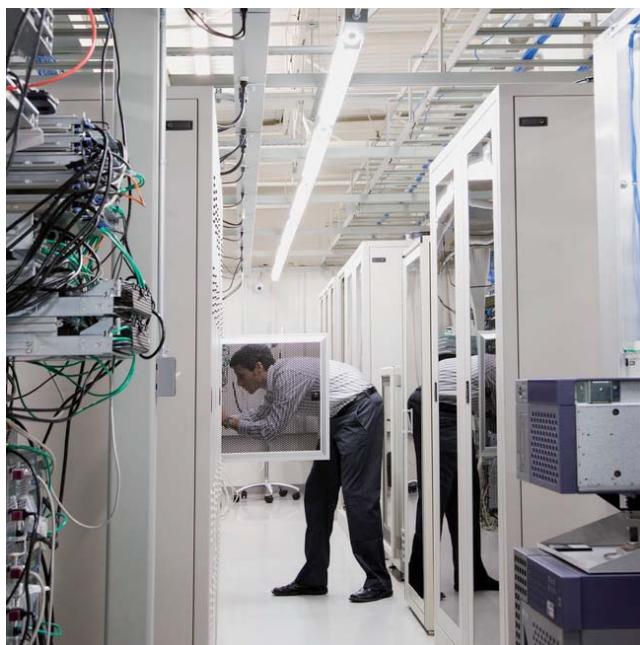
- Power factor correction with sinusoidal input to ensure a low impact on the mains supply (UPS input power factor, close to 1) for the single-phase/single-phase series

**OTHER CHARACTERISTICS**

- Reliable, filtered, stabilised and regulated sinewave output (double conversion on-line technology VFI according to EN62040-3 specifications) with filters for atmospheric disturbance suppression
- High level diagnostics: states, measurements and alarms available from the built-in LCD
- Very low noise level <40dBA
- Auto restart on mains return (programmable via software)
- Standby/Off: for security applications like emergency lighting where the UPS is switched on but the loads are powered through the bypass supply. When the mains fails or falls outside a preset range the inverter automatically powers the load
- Back feed protection as standard: to avoid energy feeding back into the mains supply

**ADVANCED COMMUNICATION**

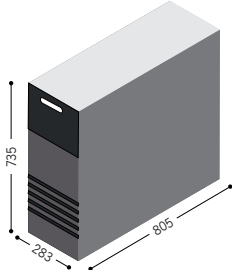
- Compatible with TeleNetGuard for remote maintenance
- Advanced, multi-platform communication for all operating systems and network environments: PowerShield<sup>3</sup> monitoring and shut-down software included, with SNMP agent, for Windows 9x, ME, NT 4.0, 2000, XP, Vista and 2003 server; Mac OS X, Linux, Novell and most popular Unix operating systems.
- The UPS is supplied with a communications cable for 'Plug and Play' PC connection
- RS232 serial port (double serial port optional)
- Rear panel IEC socket for supplying local loads
- EPO (Emergency Power Off) contact for remote UPS shut-down
- Interface card slot
- Microsoft Certified Product



TECHNICAL DETAILS

| MODELS                                       | PWP 650   | PWP 800      | PWP 1000      |
|--|---|--------------|---------------|
| POWER  | 6500VA/4600W  | 8000VA/5600W | 10000VA/7000W |
| <b>INPUT</b>                                 |   |              |               |
| Rated voltage                                | 230 Vac single-phase or 400 Vac three-phase with neutral                          |              |               |
| Minimum voltage without battery intervention | 170 Vac @ load 100% / 140 Vac @ load 50%  |              |               |
| Rated frequency                              | 50/60 Hz $\pm$ 5 Hz   |              |               |
| <b>BY PASS</b>                               |   |              |               |
| Voltage range                                | 180 - 264 Vac (selectable in Economy Mode and Smart Active Mode)                  |              |               |
| Frequency range                              | Selected frequency $\pm$ 5 Hz   |              |               |
| <b>OUTPUT</b>                                |   |              |               |
| Rated voltage                                | 220 - 230 - 240 Vac selectable  |              |               |
| Voltage distortion                           | < 2% with linear load / < 5% with non-linear load                                 |              |               |
| Frequency                                    | 50/60 Hz selectable or auto sensing   |              |               |
| Static variation                             | $\pm$ 1 %   |              |               |
| Dynamic variation                            | $\leq$ 5% in 20 ms  |              |               |
| Waveform                                     | Sinewave  |              |               |
| Crest factor                                 | 3 : 1   |              |               |
| <b>BATTERIES</b>                             |   |              |               |
| Recharge time                                | 6 - 8 h   |              |               |
| <b>OVERLOAD CAPACITY</b>                     |   |              |               |
| 100% < Load < 125%                           | 2'  |              |               |
| 110% $\leq$ Load < 150%                      | 30"   |              |               |
| Load $\geq$ 150%                             | 0.5"  |              |               |
| <b>ENVIRONMENTAL</b>                         |   |              |               |
| Weight (kg)                                  | 133   | 134          | 135           |
| Dimensions (hwd) (mm)                        | 735 x 283 x 805   |              |               |
| Efficiency                                   | Input single-phase 91% / Input three-phase 92%                                    |              |               |
| Line-interactive/Smart Active efficiency     | 98%   |              |               |
| Protection                                   | Overload - short-circuit - overvoltage - undervoltage - temperature - low battery |              |               |
| Communication                                | RS232 + remote contacts + communication interface slot                            |              |               |
| Compliance                                   | EN 62040-1 EMC EN 62040-2 Directives 73/23 - 93/68 - 2004/108 EC EN 62040-3       |              |               |
| Operating temperature                        | 0°C - 40°C  |              |               |
| Relative humidity                            | < 95% non condensing  |              |               |
| Colour                                       | Light grey RAL 7035   |              |               |
| Noise  | < 40 dBA at 1 m   |              |               |
| <b>OPTIONS</b>                               |   |              |               |
| Extended runtime solutions                   | yes (with and without battery charger)  |              |               |
| Isolation transformer box (hwd) mm/kg        | 500 x 400 x 265 / 80  | -            |               |

Product characteristics can be customised to meet client specifications.

| BATTERY BOX MODELS    | Dimensions (mm) h x w x d   |
|-----------------------|---|
| BB 360-7<br>BC 360-12 |  |
| PWP MODEL             |   |
| PWP 650-800-1000      |   |